

Rural Health Transformation (RHT) Program

Program Overview

August 2025

INFORMATION NOT RELEASABLE TO THE PUBLIC UNLESS AUTHORIZED BY LAW: This information has not been publicly disclosed and may be privileged and confidential. It is for internal government use only and must not be disseminated, distributed, or copied to persons not authorized to receive the information. Unauthorized disclosure may result in prosecution to the full extent of the law.



AGENDA

- ☐ Program Overview
- ☐ Application Information
- ☐ Timeline & Next Steps

What is the Rural Health Transformation Program?

\$50 Billion

Over 5 years

Established by OBBB

*to transform care and improve
outcomes in rural communities*

50% to Approved States

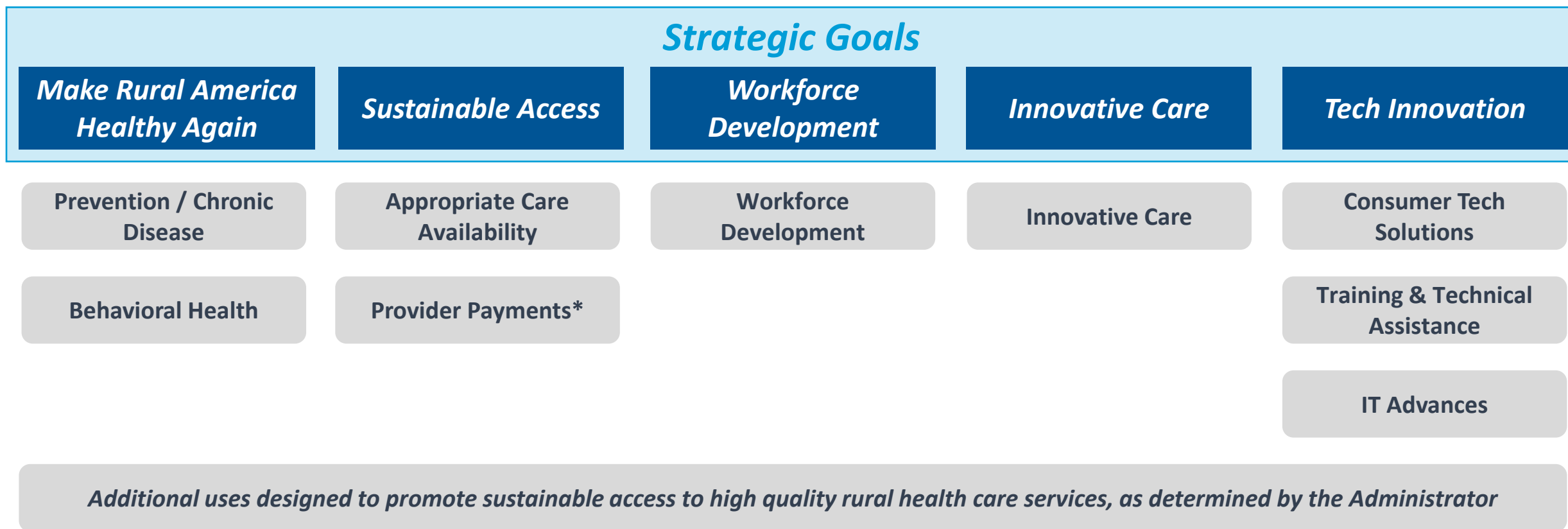
**50% Based on Ruralness,
State Policies & Quality of
Application**



RURAL HEALTH
TRANSFORMATION

INFORMATION NOT RELEASABLE TO THE PUBLIC UNLESS AUTHORIZED BY LAW: This information has not been publicly disclosed and may be privileged and confidential. It is for internal government use only and must not be disseminated, distributed, or copied to persons not authorized to receive the information. Unauthorized disclosure may result in prosecution to the full extent of the law.

What are the Use of Fund Requirements?

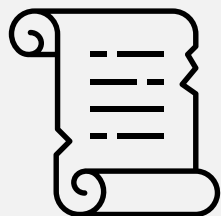


Note: Additional details available in the statute

**Cannot supplant or modify fee schedule payments for insurance reimbursable clinical services. Justify why provider payments are not already reimbursable or how the payment will fill a gap in care coverage*

INFORMATION NOT RELEASABLE TO THE PUBLIC UNLESS AUTHORIZED BY LAW: This information has not been publicly disclosed and may be privileged and confidential. It is for internal government use only and must not be disseminated, distributed, or copied to persons not authorized to receive the information. Unauthorized disclosure may result in prosecution to the full extent of the law.

What is in the Application?



Statutory Requirements

Detailed transformation plan and initiatives that align against at least 3 of the statutorily approved use of funds categories

Use of funds on prior page

Initiatives have measurable outcomes, plan to engage key stakeholders, highlights impacted counties across a State, is sustainable, and directly impacts health care of rural residents

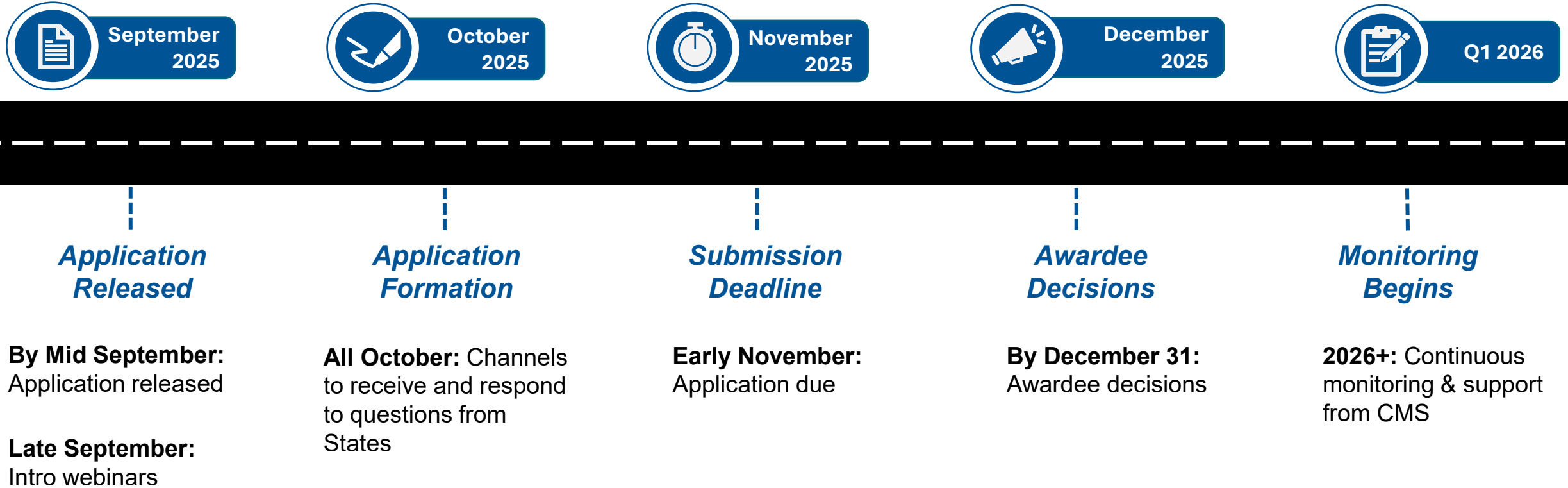
Strategic Alignment



Budget & Operations

Workplan and timeline for implementation including: budget, milestones, data tracking and commitment to State policy changes (if committed to in a State's submitted plan) within 2 years

What is the Expected Timeline?



INFORMATION NOT RELEASABLE TO THE PUBLIC UNLESS AUTHORIZED BY LAW: This information has not been publicly disclosed and may be privileged and confidential. It is for internal government use only and must not be disseminated, distributed, or copied to persons not authorized to receive the information. Unauthorized disclosure may result in prosecution to the full extent of the law.

We want to hear from you!



Email us directly:
Send your thoughts & questions
to MAHARural@cms.hhs.gov